



EnOS™ Renewables

Intelligent and seamless  
management for wind, PV,  
solar and storage assets



# We understand your sustainability challenges

While technology for generating electricity from the sun, wind and water has progressed over the past two decades, significant challenges remain that companies must overcome to be competitive in a crowded market:

→ **Unexpected downtime**

Unexpected downtime due to unmonitored issues can lead to loss of confidence and revenue.

→ **Reactive maintenance**

Maintenance and fault management is currently reactive, not predictive, with no visibility to predict repairs ahead of time.

→ **Missing visibility**

Incomplete and unconnected data mean stakeholders lack a complete overview.

→ **Piecemeal intelligence**

Best practices and partner performance insights remain hidden when data is siloed.

## EnOS™ Renewables: AI for Energy

Renewable power generation requires continual, meticulous maintenance to deliver optimal efficiency. But by building intelligence into our infrastructure, we can significantly improve its performance and reliability.



**Reduced revenue loss**

EnOS™ Renewables is built to drastically reduce downtime through prevention, rapid response and better planning intelligence.



**Build learnings**

Gain a better understanding of plant performance, enabling the best-in-class performers and design strategies.



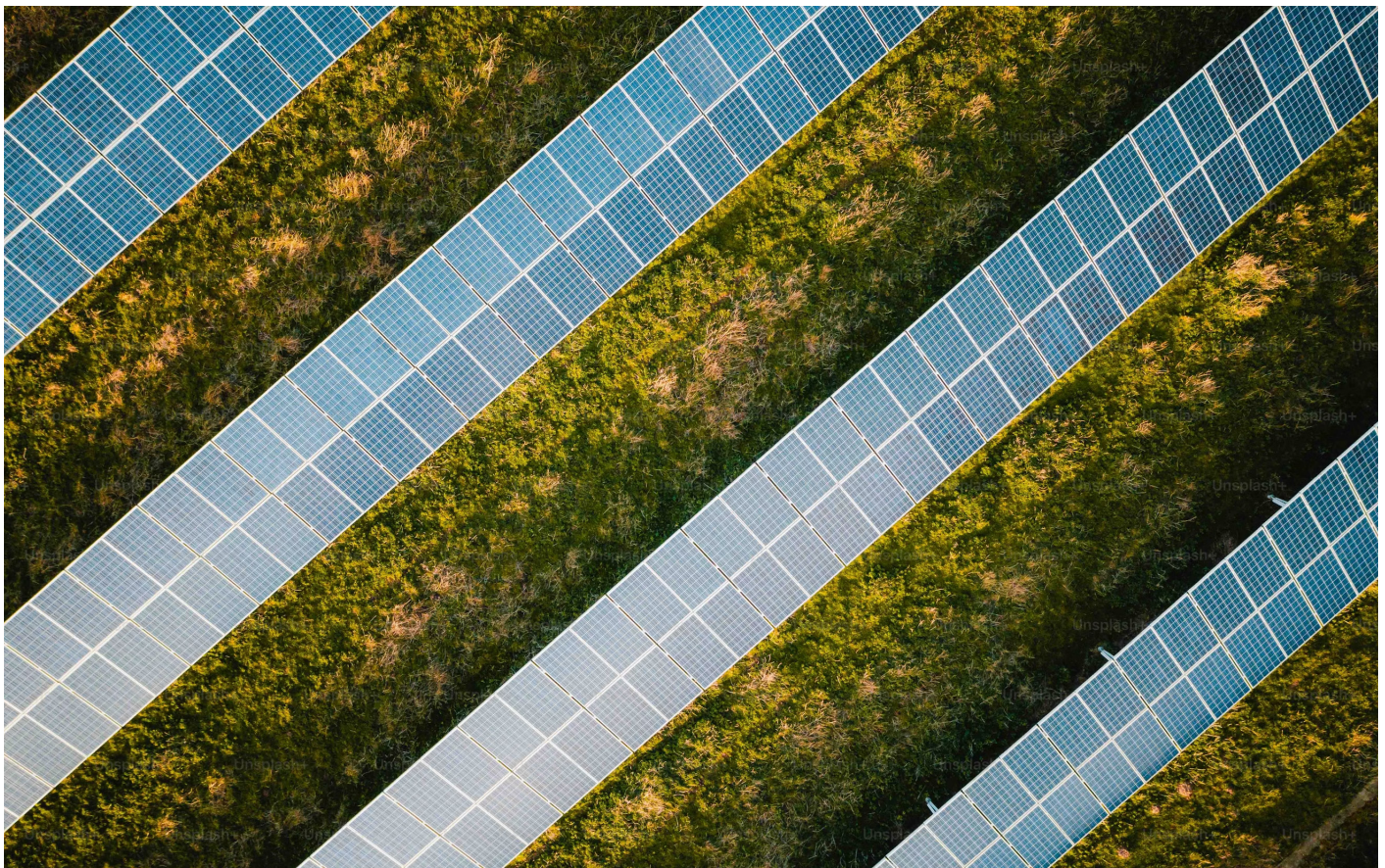
**Predictive maintenance**

Understand where faults are likely to occur before they happen, with AI-powered monitoring systems.



**Real-time intelligence**

24/7 monitoring of each individual asset through IoT and data analytics allow faults to be detected instantly and repair teams to be allocated rapidly.





# Capabilities at a glance

EnOS™ Renewables is built to be seamless, compatible, extendable and modular, meeting customers' needs at every stage of their energy and digitalisation journey.



## Full visibility

The status of every asset is available across the organisation at any time through 24/7 monitoring and a centralised command centre.



## Easy onboarding

Our software comes with compatibility built-in through extensive (and expanding) device libraries and protocol adapters.



## Reduce downtime

AI-powered root cause analysis and benchmarking allow predictive maintenance: protect your investments and prevent issues from occurring.



## Auto-reporting

Enables automatic generation of reports required by regulators and stakeholders from the moment the software is activated.



## Improve performance

Understand instantly where plant assets are underperforming and deploy maintenance teams to investigate.



## Build better

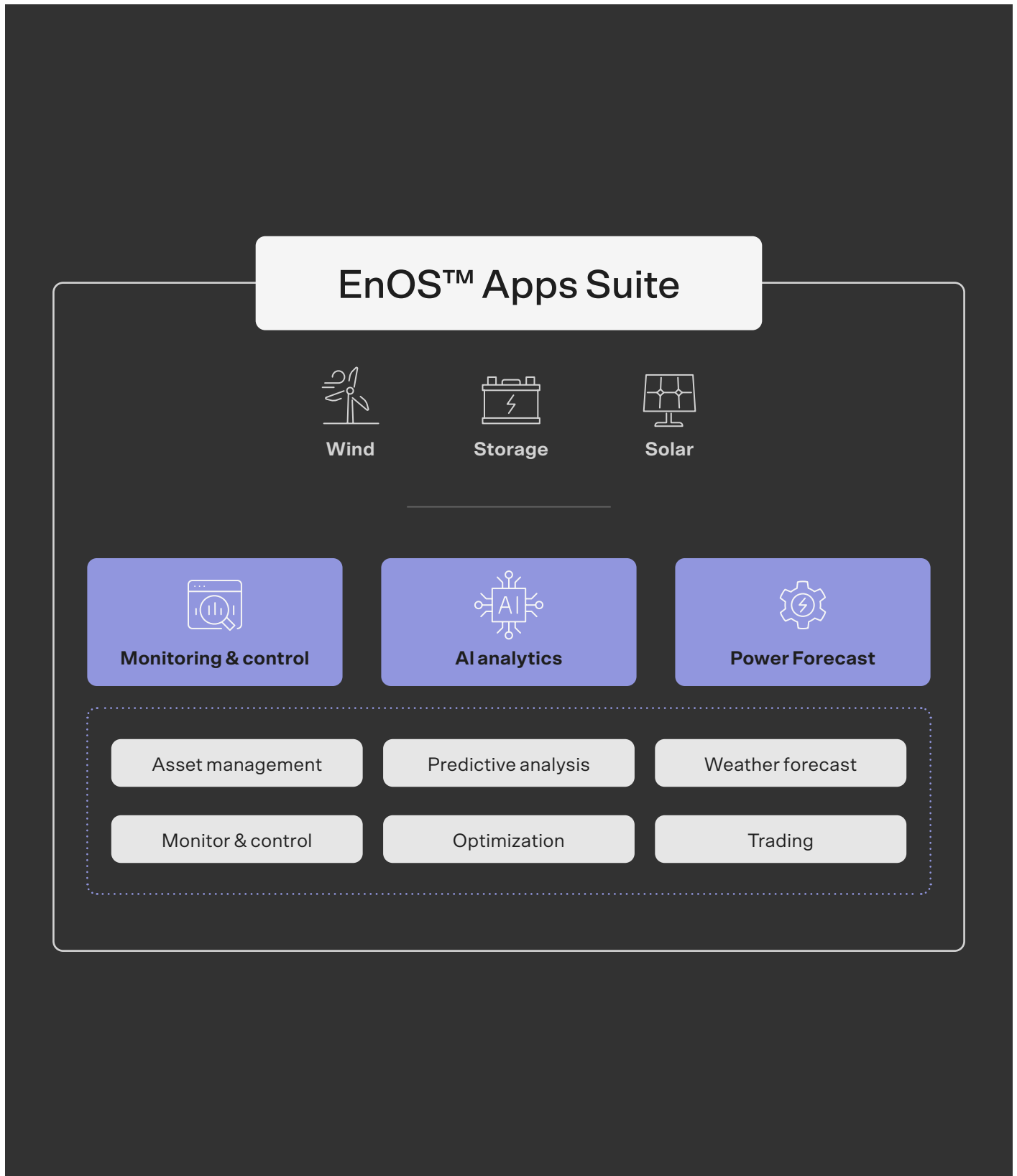
Compare asset performance and designs to select optimal components for future development.



# How EnOS™ Renewables works

EnOS™ Renewables brings information from ground-level, from every asset in your portfolio, ingesting that information into a cloud-level operating system. This can include information from power meters or electrical lines, coupled to IoT sensors, but also other external data, such as weather forecasts, indications and power market information.

In the cloud, centralised monitoring and control is enabled. And data is processed by advanced analytics and AI modelling tools to provide continual intelligence on performance, availability and many other metrics to allow precise, intelligent management of every asset as well as whole plants and systems.



# How EnOS™ Renewables differentiates itself

## Hardware-agnostic and OEM-compatible

EnOS™ Renewables is built for compatibility with any of the hundreds of potential suppliers of wind, solar and energy storage suppliers. And whenever we find a new one, we'll add it to our list. This means plant owners and operators can use EnOS™ Renewables 'out of the box', whatever existing hardware is in play, and it won't restrict their future choices either.



## Built to scale with your evolving energy mix

EnOS™ Renewables is the only system with our breadth of support, operating across the spectrum of renewable power and storage sources. For companies with a diverse range of plants, or who plan to diversify in the future, it is the only system which offers an all-in-one solution. At the same time, our approach also goes deep: from individual assets on site right up to a global cloud platform.



## Unrivalled experience

EnOS™ Renewables is already entrusted with managing 788GW of managed renewable power globally: more than 280GW across 53 countries. It is the world leader in power management software by some margin. Our company was built on decades of experience in the field to create a new, unified and advanced operating system for energy management across every stage of its creation, storage and consumption.



# Proven solutions that drive real results

● Melbourne

## Akaysha Energy

Akaysha Energy is a Melbourne-headquartered energy company with a mission is to lead the energy transition through the innovative design and rapid deployment of mega scale Battery Energy Storage Systems (BESS).

Akaysha selected EnOS™ Renewables as its data platform and central monitoring system for its BESS portfolio. EnOS™ Renewables will be the monitoring solution for its ground-breaking 1680 MWh Waratah Super Battery, the largest BESS in the world.

### Outcomes:



Monitoring for 1,680MWh BESS (largest globally).



Cross-site asset visibility for growing portfolio



● Global

## Multinational energy company

The largest renewable assets company in the world relies on EnOS™ Renewables for the end-to-end management of its energy ecosystem. More than 240GW of power, spread across China and Europe, are managed through one global command centre.

### Outcomes:



IoT data acquisition from solar, wind and grid assets.



Data management, modelling and analytics through a cloud-level platform.







# Manage complex infrastructures with a unified control and optimisation system for your PV, wind, solar and battery storage assets with EnOS™ Renewables.

Univers is the global leader in **AI and IoT for Energy**. Our EnOS™ platform empowers enterprises across industries to solve complex energy challenges with intelligent, data-driven insights.

With over 365 million devices connected, more than 845GW of 1,200+ customers, we are the only global technology partner offering a truly comprehensive, end-to-end energy management solution, supporting enterprises at every stage of their energy transition journey.

## Get started today



[univers.com](https://univers.com)



[linkedin.com/company/univers-intl/](https://linkedin.com/company/univers-intl/)



### Asia

Singapore (HQ)  
Japan  
Malaysia  
Thailand  
India  
China  
Hong Kong

### Europe

Austria  
Italy  
Spain  
Germany  
Norway  
Netherlands  
UK  
France

### North America

USA

### Oceania

Australia