



EnOS™ **Ark**

The AI nerve centre
for energy efficiency

We understand your sustainability challenges

Enterprises today face mounting sustainability pressures — from tightening regulations to inefficient resource management — while balancing compliance, operational efficiency, and cost control.

Many organisations struggle with:

→ **Siloed data**

Emissions data is scattered across teams, spreadsheets, and third-party tools.

→ **Visibility gaps**

Lacking data means energy waste and the signs of failure remain undetected.

→ **Regulatory burden**

Compliance is becoming a full-time job as carbon disclosure rules tighten.

→ **Rising prices and uncertainty**

Plans to mitigate the cost of carbon-based energy and reduce usage depend on precise calculations.

Powered by AI, EnOS™ Ark is built to drive change

EnOS™ Ark empowers organisations to manage resources, carbon, and HVAC data across multiple sites in real-time, bringing three distinct capabilities. More than mere compliance, enterprises can cut costs, optimise resources, and turn sustainability into a competitive advantage.



Carbon Management

Automate Scope 1 & 2 data capture through OEM/brand-agnostic IoT and analysis with AI – along with full reporting and offset management capabilities.



Resource Management

Unify energy and emissions management in a single platform, delivering real-time monitoring, analytics, and optimisation.



AI HVAC Optimisation

Use AI to monitor, maintain and optimise heating, ventilation, and air conditioning to achieve energy savings and ensure smooth operations.



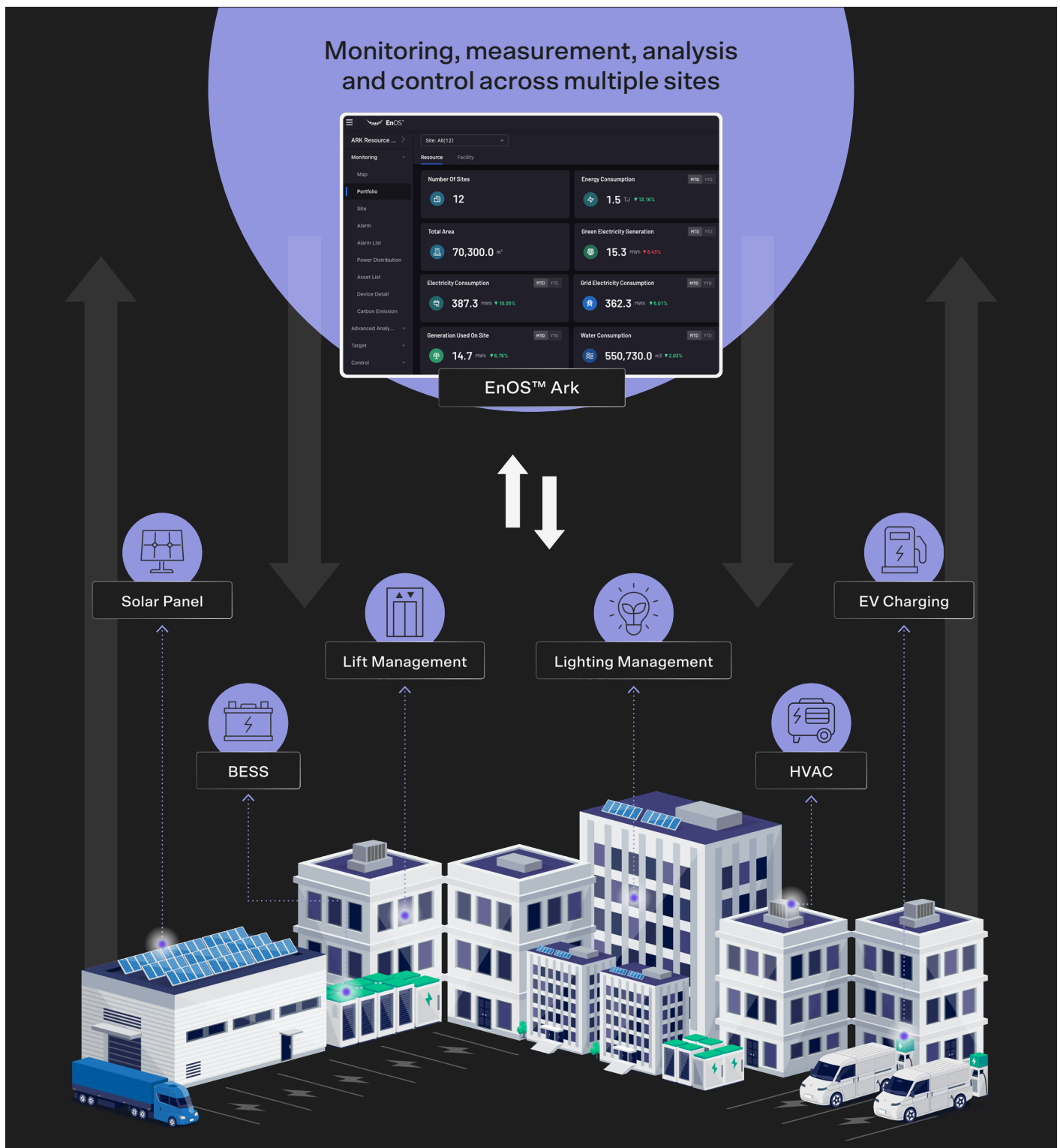
How EnOS™ Ark works

EnOS™ Ark seamlessly integrates with enterprise systems from any supplier to provide real-time sustainability oversight, predictive intelligence and AI-powered automation.

It collects and processes data from:

- **Meter readings:** Electricity, gas, oil and water usage.
- **IoT sensors:** Heat, lighting, humidity, movement and industrial machinery inputs/outputs.
- **IT data sources:** Supply chain, waste and external factors, like weather patterns.

This data powers real-time benchmarking and emissions tracking across the entire portfolio, helping businesses set and meet sustainability targets. It is OEM/brand agnostic, working with the systems already in place, or planned for the future.



Capabilities at a glance

EnOS™ Ark empowers organisations to manage energy and emissions data in real time, enabling management and control across the portfolio.



Energy Management

Enterprise-wide intelligent measurement and optimization of energy, water, and waste, with unified data analytics, and actionable performance insights.



Asset Monitoring and Operation for the Built-Environment

Use AI to monitor, maintain and optimise heating, ventilation, and air conditioning to achieve energy savings and ensure smooth operations.



Lift Monitoring & Maintenance

IoT-enabled, continuous monitoring of your lift portfolio's operational status and performance delivering intelligent alerts and predictive maintenance capabilities.



Carbon Management

Automated real-time emissions tracking and reporting across your portfolio, featuring audit-grade accuracy, and actionable sustainability insights.



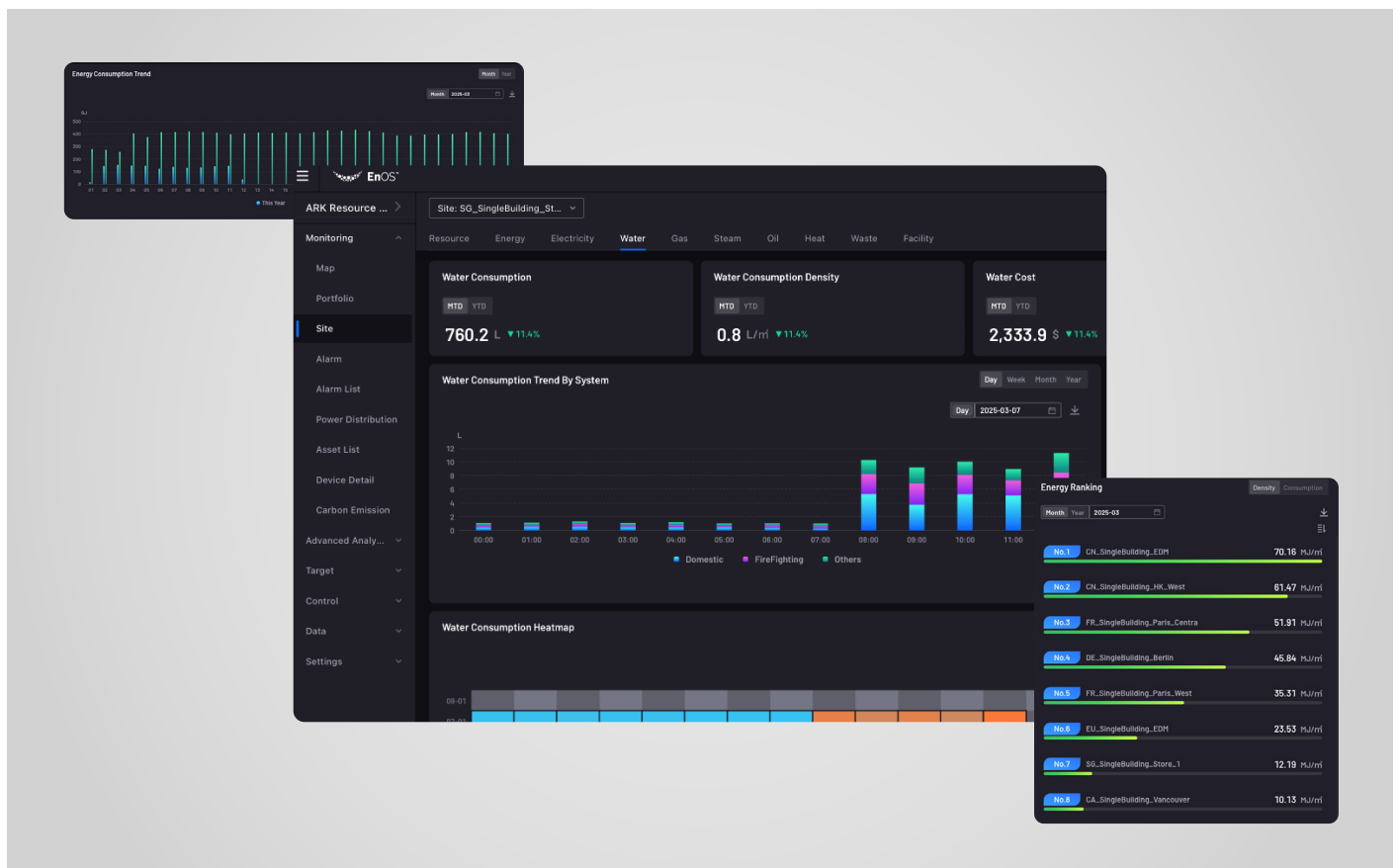
AI-Powered HVAC Monitoring, Control & Optimisation

AI-powered, real-time control with full BMS integration, enabling data-driven performance analysis, predictive operations, and automated energy savings verification.



Cooling Optimisation Solution

Intelligent cooling optimization, delivering rapid ROI through automated and actionable analytics across sites, alongside documented emissions reductions.



How EnOS™ Ark differentiates itself

EnOS™ Ark delivers real-time monitoring, analytics, optimisation, and fault detection. Our algorithms learn from building data to identify patterns, predict issues, and recommend energy savings.

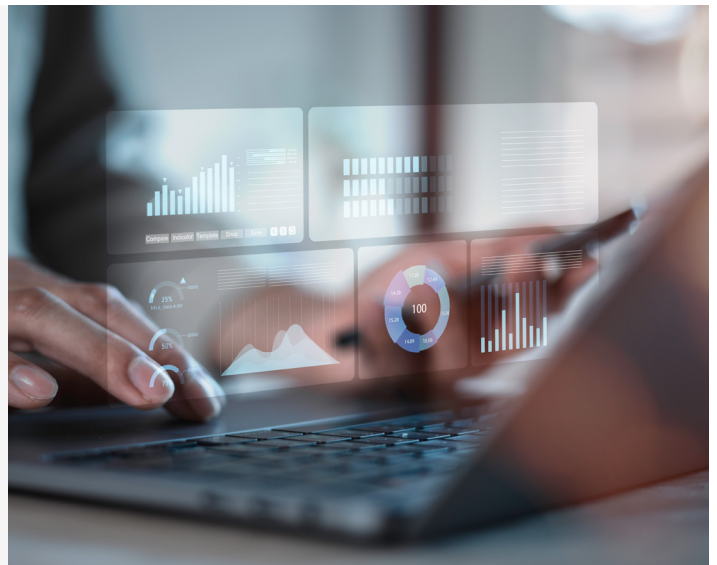
Unified enterprise platform

A single OEM/brand-agnostic solution for energy, carbon, HVAC, and asset management that replaces multiple disconnected systems.



Faster ROI

Achieve payback in under two years through AI-driven efficiency.



Proven portfolio performance

Deploy across hundreds of sites with high accuracy, integrating real-time IoT and IT data.



Proven solutions that drive real results

• Security

Certis – Facilities management & HVAC efficiency

Certis, a leader in security and integrated solutions, deployed EnOS™ Ark to enhance energy efficiency in its Command Center, Mozart. By integrating IoT sensors for real-time data and AI-driven set point adjustments, the system reduced manual intervention while maintaining indoor comfort and optimising energy use.

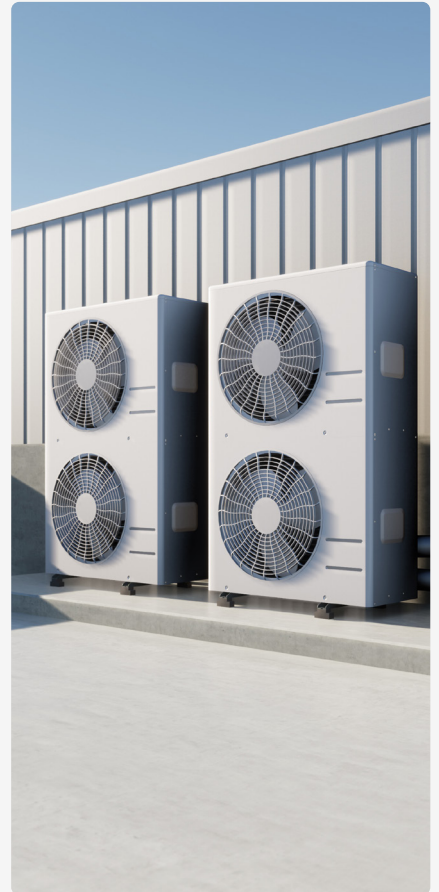
Outcomes:

10%

productivity gain through automated monitoring and adjustments optimised workforce deployment.

5%

reduction in energy costs.



• Pharmaceuticals

Smart energy optimisation for life sciences

A global leader in pharmaceuticals and diagnostics deployed EnOS™ Ark at its 50,000 sqm research and office facility to drive greater energy efficiency. The platform integrated data from HVAC systems, lighting and building operations to optimise performance and reduce environmental impact.

Outcomes:

3 months

time to deployment, enabling immediate visibility into key energy metrics.

35%

reduction in energy consumption, generating significant annual cost savings.



HSBC – Financial services & real estate operations

HSBC partnered with Univers to reduce energy waste across offices and branches in Singapore, Malaysia and Hong Kong. EnOS™ Ark was integrated with legacy BMS infrastructure and optimised in collaboration with HSBC's facilities management team to deliver enterprise-wide insights into energy performance and HVAC loads.

Outcomes:

>700_k kWh
of energy savings.

3_x
higher ROI than expected.





Sustainability doesn't have to be complex.
EnOS™ Ark offers a truly comprehensive,
end-to-end sustainability and energy
management solution.

Univers is the global leader in **AI and IoT for Energy**.
Our EnOS™ platform empowers enterprises across
industries to solve complex energy challenges with
intelligent, data-driven insights.

With over 365 million devices connected, more than
845GW of renewables managed, and a global network
of 1,200+ customers, we are the only global technology
partner offering a truly comprehensive, end-to-end energy
management solution, supporting enterprises at every
stage of their energy transition journey.

Get started today



univers.com



linkedin.com/company/univers-intl/



marketing@univers.com



Asia
Europe

North America
Oceania

Middle East
South Africa